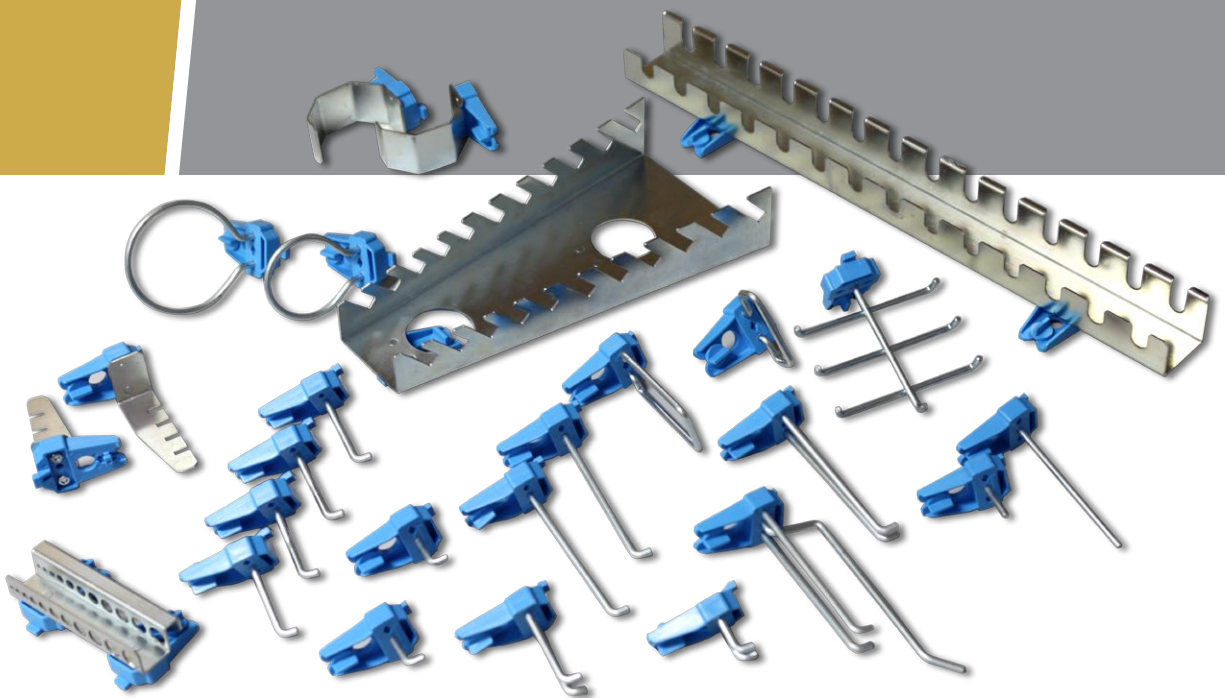


VTS TWIST & LOCK TOOL HOOKS EASY ORDER GUIDE



TOOL HANGING ACCESSORIES

Twist & Lock Tool Hooks

With the Wall Mount Panel System, tools and equipment are organised and neatly stored above the work top area with the use of varying sizes of hooks, holders and hangers. The simple lock and twist design means these tool hooks can be locked and relocated with ease.

- Zinc plated steel & plastic mount
- Large range of hooks, hangers and holders
- Lock & twist design makes using simple
- Load rated to 5kgs per hook
- Available in red ● & green ● kits
Number denotes quantity per kit.

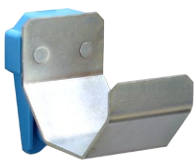


Tool hanging accessory kits

● Red is recommended for 720mm & 1440mm wide panels
44 pieces in total

● Green is recommended for 2052mm wide panel
76 pieces in total

Multi-Purpose Holder



φ (mm)
60 ● 4 ● 2

Single Pin (100mm)



L (mm)
100 ● 8 ● 4

Spanner Holder



slots
8 ● 1 ● 1

Single Pin (25mm)



L (mm)
25 ● 6 ● 4

U Shape Holder



L(mm)	W(mm)
70	25 ● 4 ● 2
23	55 ● 4 ● 2

Tool Hook



L(mm)	H(mm)
25	14 ● 6 ● 4
50	14 ● 6 ● 6
100	● 6 ● 4

Round Hook



φ (mm)
60 ● 1
80 ● 2 ● 1

Double Hook

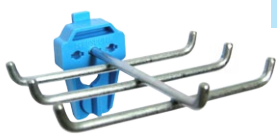


L(mm)	W(mm)
25	35 ● 6 ● 3
50	35 ● 4 ● 2
100	35 ● 4 ● 1



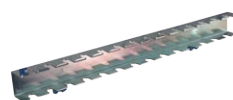
All Lock & Twist Tool Hooks shown above are what is available in the ● red kit.

Multi Hook



L(mm) W(mm)	
138	240 ● 1

Screwdriver Holder



L (mm)
1 ● 1

Saw Holder



slots
4 ● 2

Drill Bit Holder



L (mm) Holes
26 ● 1

Tri Hook

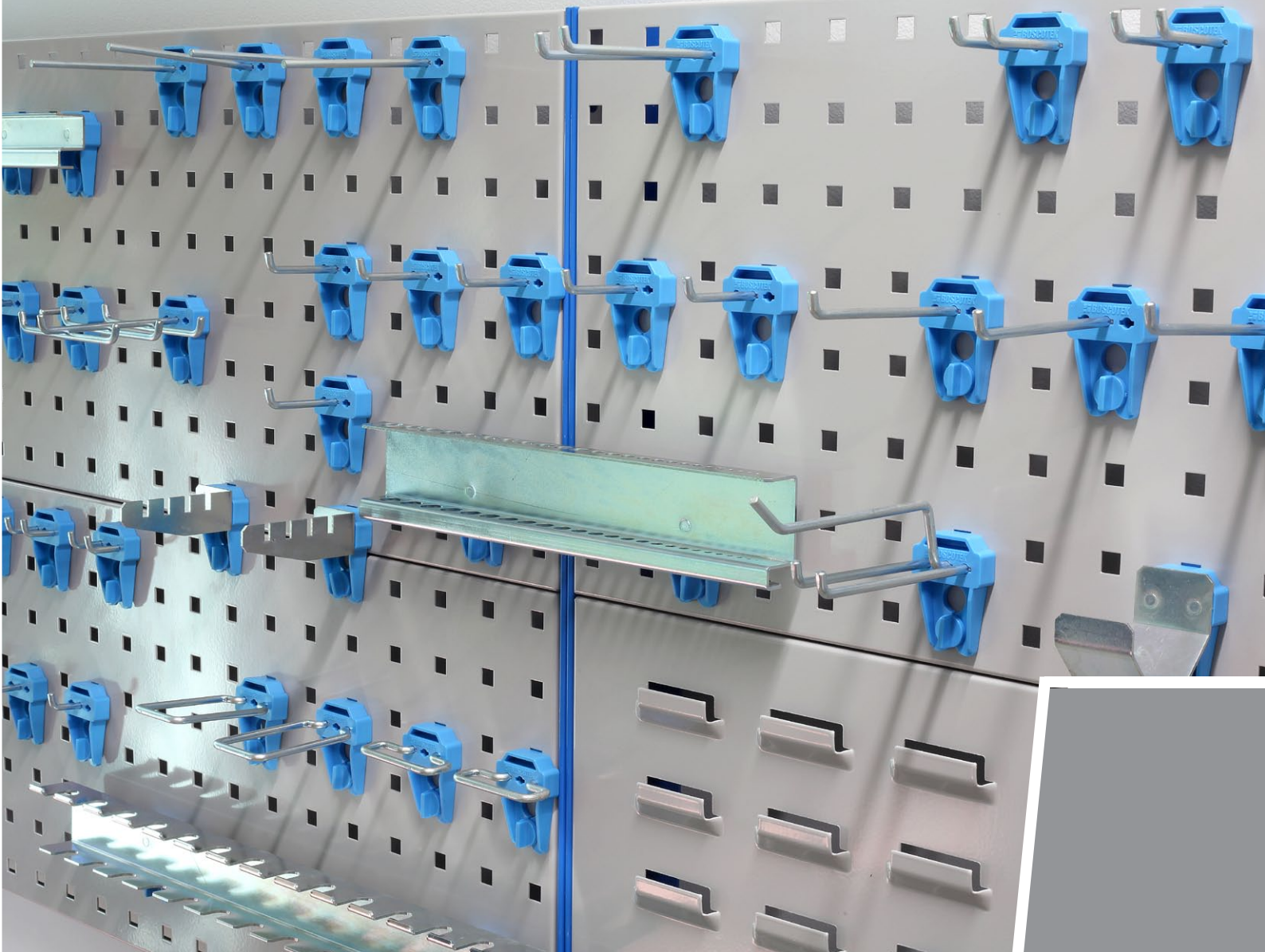


L (mm)
2 ● 1

Allen Key Holder



Holes
10 ● 2



OPIEGROUP.COM.AU



109 RUSSELL STREET, EMU HEIGHTS NSW 2750

(02) 7286111

BOSCOTEK
INDUSTRIAL BENCHES • TOOL BOXES • STORAGE

BOSCOTEK.COM.AU
SALES@BOSCOTEK.COM.AU